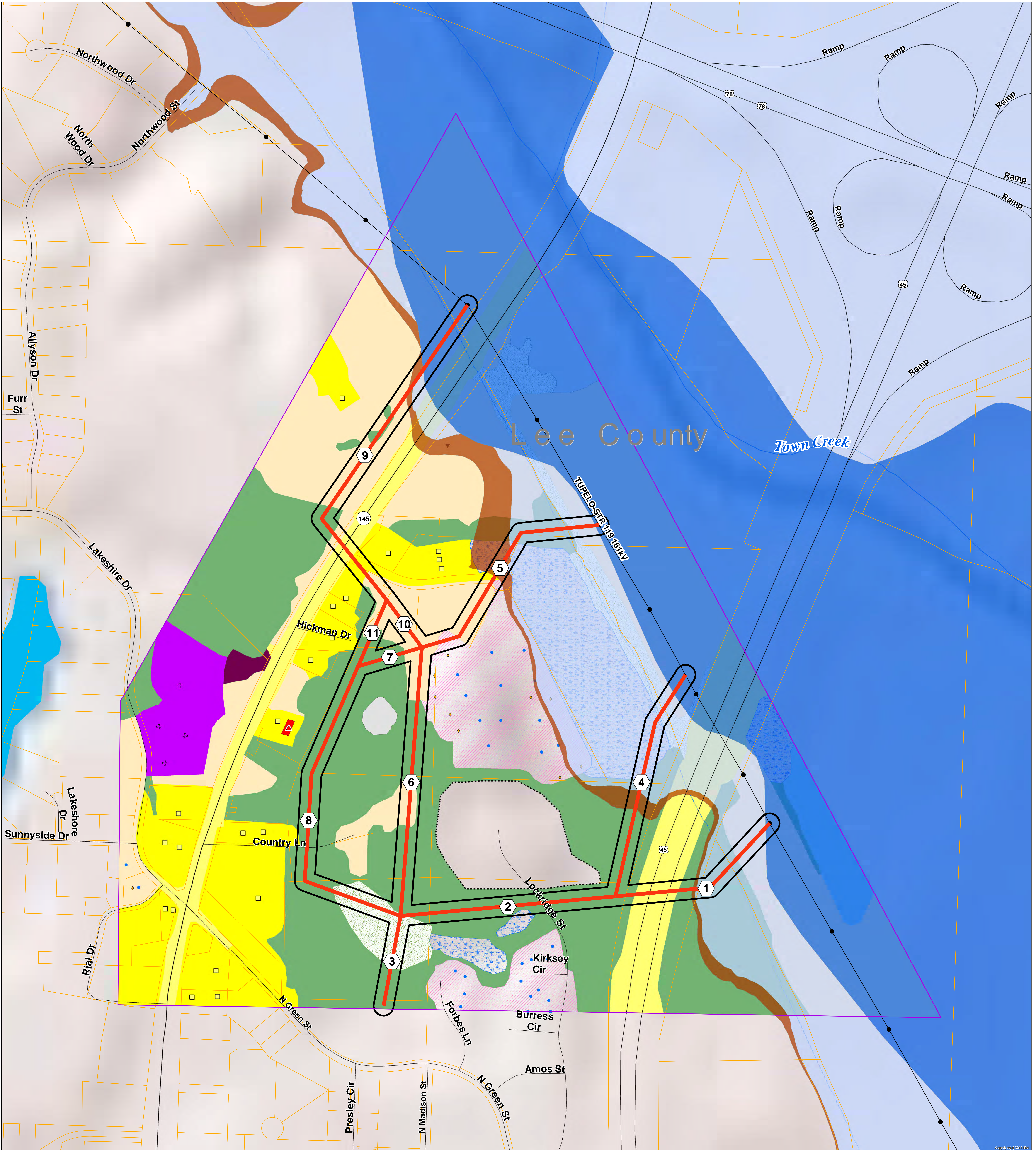
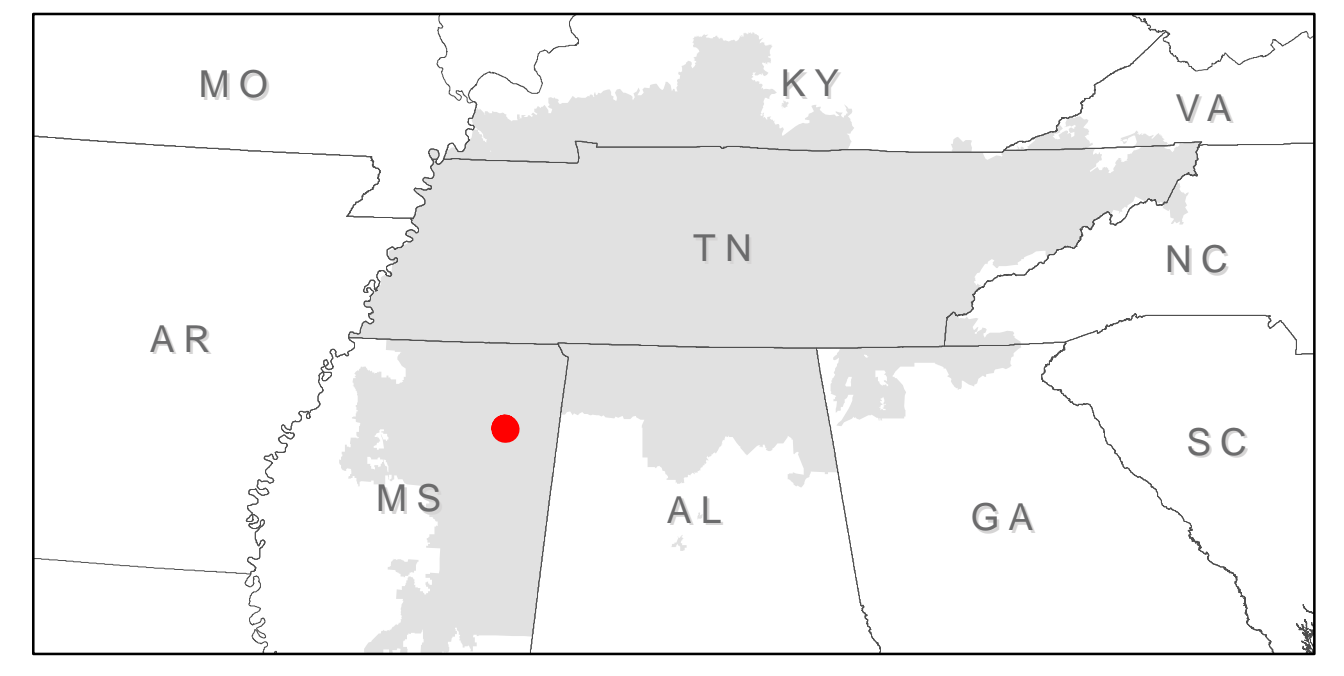
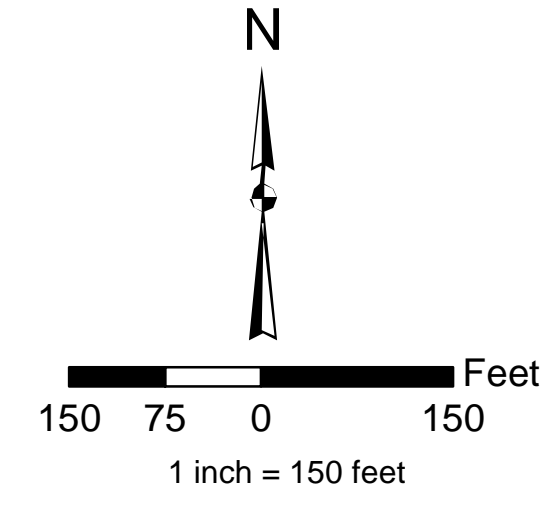




# North Green Street, MS Proposed Transmission Project



### Legend

- |                         |                    |                     |             |                                    |   |                     |           |                          |
|-------------------------|--------------------|---------------------|-------------|------------------------------------|---|---------------------|-----------|--------------------------|
| Alternative Routes      | Parcels            | Perennial Stream    | Dwelling    | Commercial                         | Residential                             | Communication       | Openland  | FEMA 100 Year Flood Zone |
| Transmission Stations   | Scaled Buildings   | Intermittent Stream | Barn        | Forest                             | Barren or Disturbed Land                | Major Highway (ROW) | Religious | FEMA Floodway            |
| Transmission Structures | Transmission Lines | Church              | Radio Tower | Cemetery                           | Memorial: James The Greater Columbarium | Water               | Wetland   | FEMA 500 Year Flood Zone |
|                         |                    |                     |             | Commercial, Service, Institutional |   |                     |           | Depressions              |